



# Architecture meets water

What makes a waterway successful?



Italy / Korea / Japan  
United States /  
France / Belgium /  
United Kingdom /  
Netherlands



**Ample**  
**Secure**  
**Complete**

# Ample

Adequate in size,  
scope, capacity.



Lake Ontario

• Oswego

Oswego

• Rome

Oneida L.

• Syracuse

• Rochester

*Present route of Erie Canal*

• Waterford

Albany★

N E W Y O R K

Genesee River

Seneca Lake

Cayuga Lake

Susquehanna R.

Hudson River

• Niagara Falls

Lockport

• Buffalo

CANADA

Lake Erie

VERMONT

MASSACHUSETTS

CONN.

P E N N S Y L V A N I A

NEW YORK

• Buffalo

Albany★



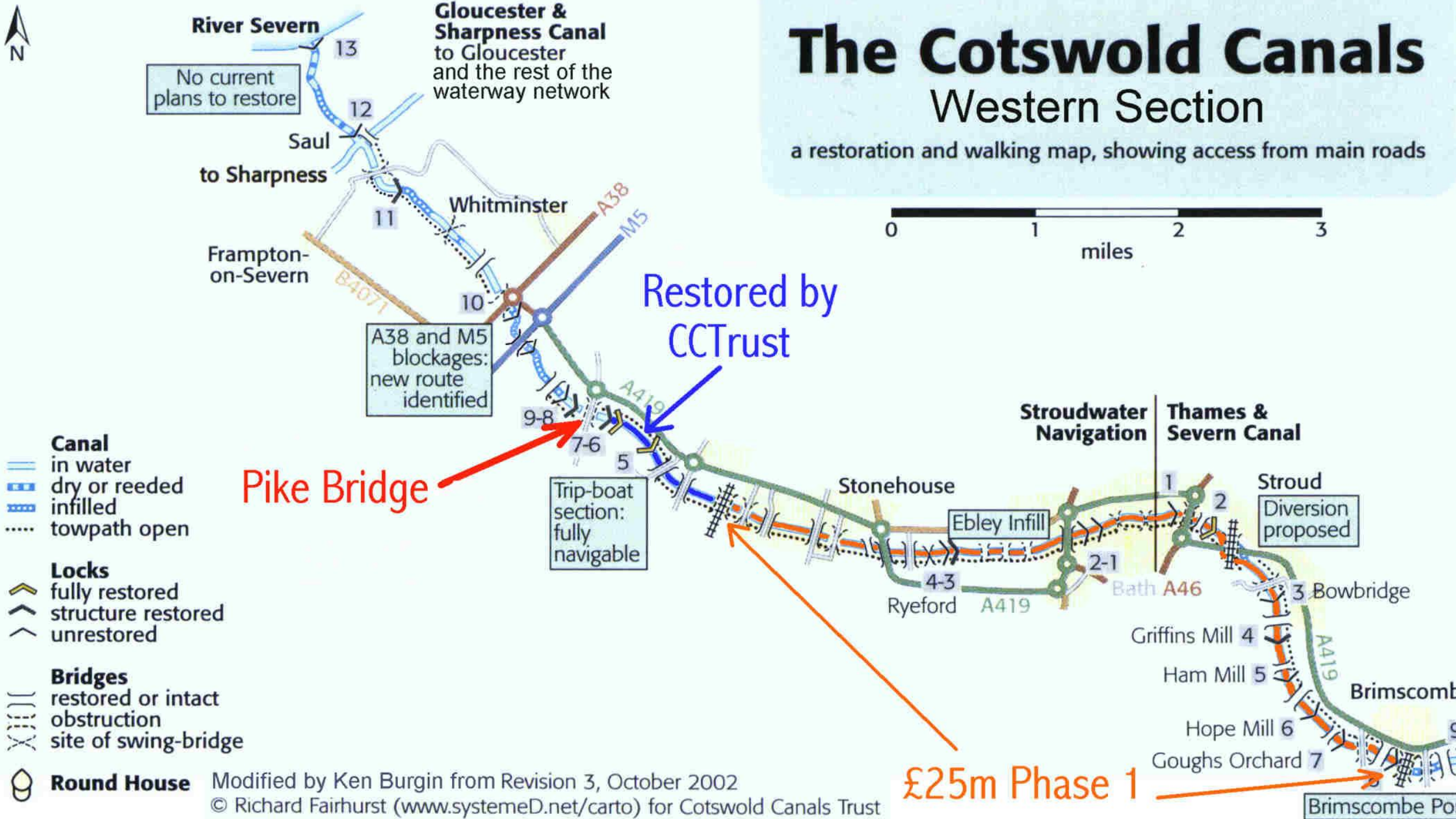




# The Cotswold Canals

## Western Section

a restoration and walking map, showing access from main roads



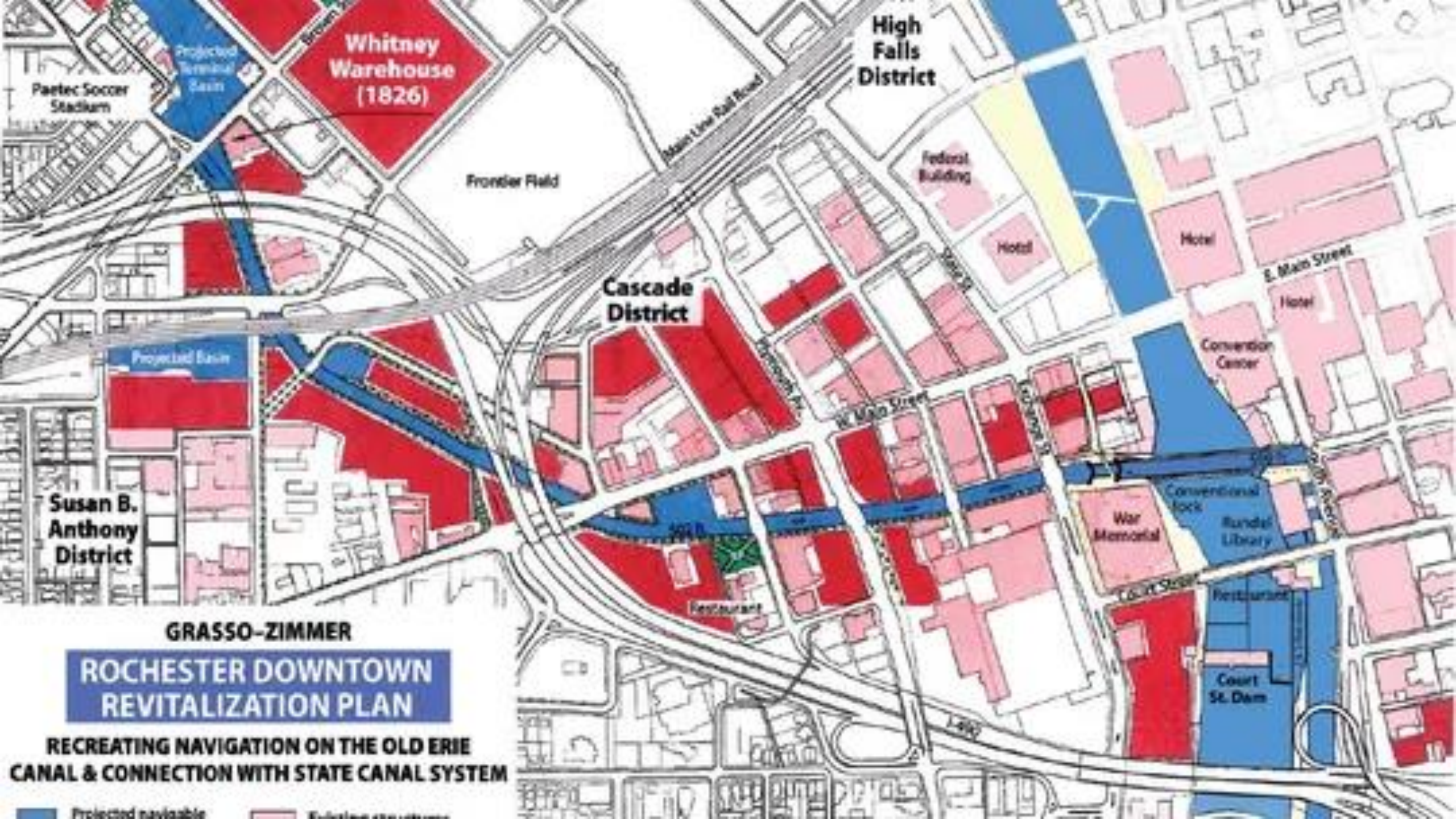
- Canal**
- in water
  - dry or reeded
  - infilled
  - towpath open

- Locks**
- fully restored
  - structure restored
  - unrestored

- Bridges**
- restored or intact
  - obstruction
  - site of swing-bridge

- Round House**

Modified by Ken Burgin from Revision 3, October 2002  
© Richard Fairhurst (www.systemeD.net/carto) for Cotswold Canals Trust



Partec Soccer Stadium

Projected Terminal Basin

**Whitney Warehouse (1826)**

Frontier Field

**High Falls District**

Federal Building

Hotel

Hotel

E. Main Street

Hotel

Convention Center

**Cascade District**

Projected Basin

**Susan B. Anthony District**

Restaurant

War Memorial

Conventional Lock

Randal Library

Restaurant

Court St. Dam

**GRASSO-ZIMMER**

**ROCHESTER DOWNTOWN REVITALIZATION PLAN**

**RECREATING NAVIGATION ON THE OLD ERIE CANAL & CONNECTION WITH STATE CANAL SYSTEM**

Projected navigable

Existing structures

MOTOR  
VEHICLES

NO PARKING  
ANY  
TIME  
←→

Utica 12 miles ↑





**Secure**

**Free from danger,  
threat of harm.**











**Gowanus Canal - Environmental Analysis**



# Complete

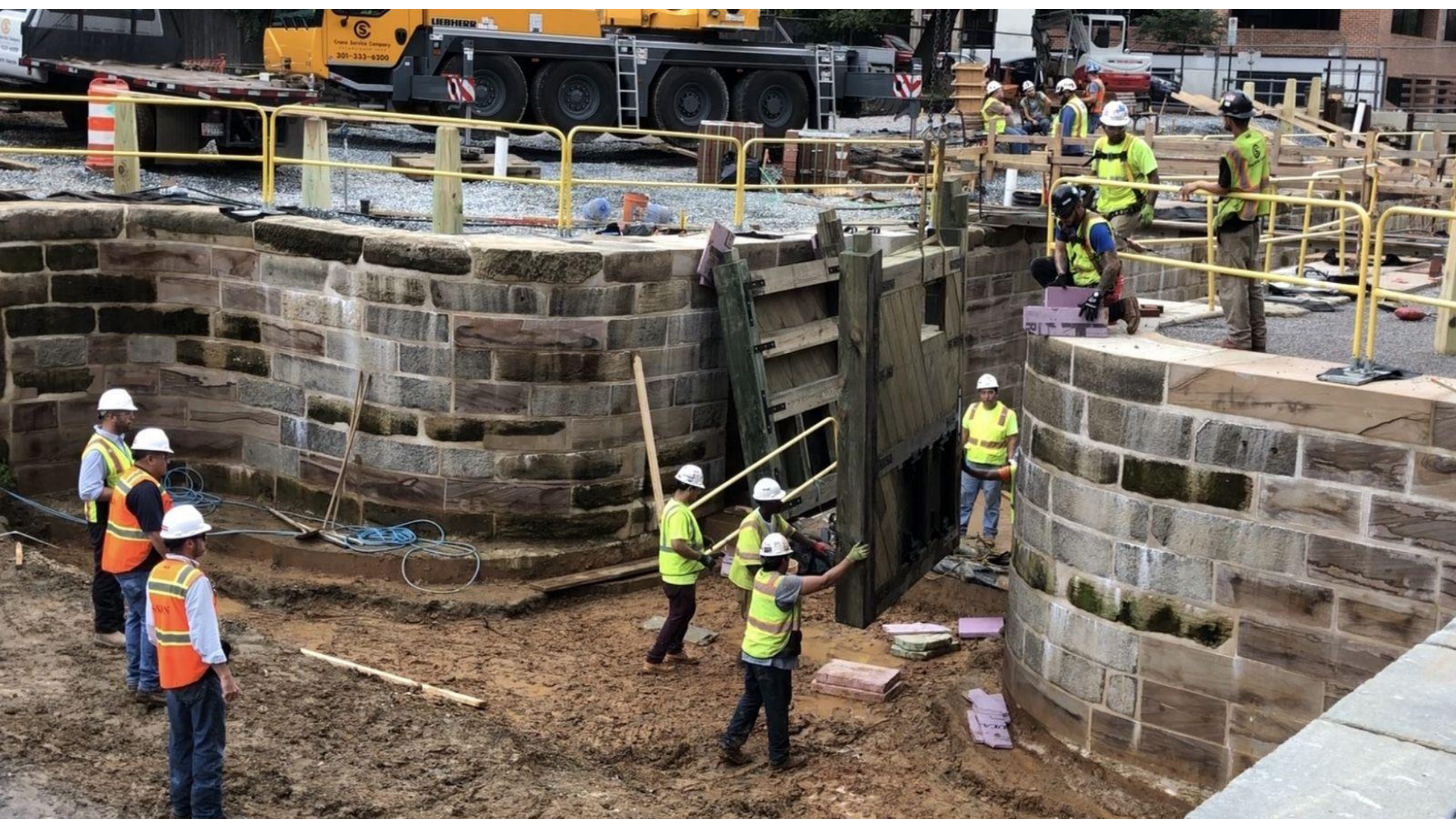
Having all necessary,  
appropriate parts.





















**Paths**

**Nodes**

**Programs**

Connections

Amenities

Activities

# Paths

Length, materials, connections, user needs









Ben Franklin III

# Nodes

Features, services, proprietors, users



Trans Pennine Trail



DERBYSHIRE  
County Council  
Countryside Service

For Information



TAPTON LOCK



TURF HOTEL



Canal &  
River Trust

# Boaters' facilities Ellesmere



CUSHWA'S  
COAL BRICK



*The Katie Dreamer*







# Programs

Activities, events, facilities, timing















International Union of Architects

*Union Internationale des Architectes*



1948      Founded in Lausanne  
27 countries

2020      Secretariat in Paris  
117 countries  
3.2 million architects







47



Unify architects

Influence policies

Advance society





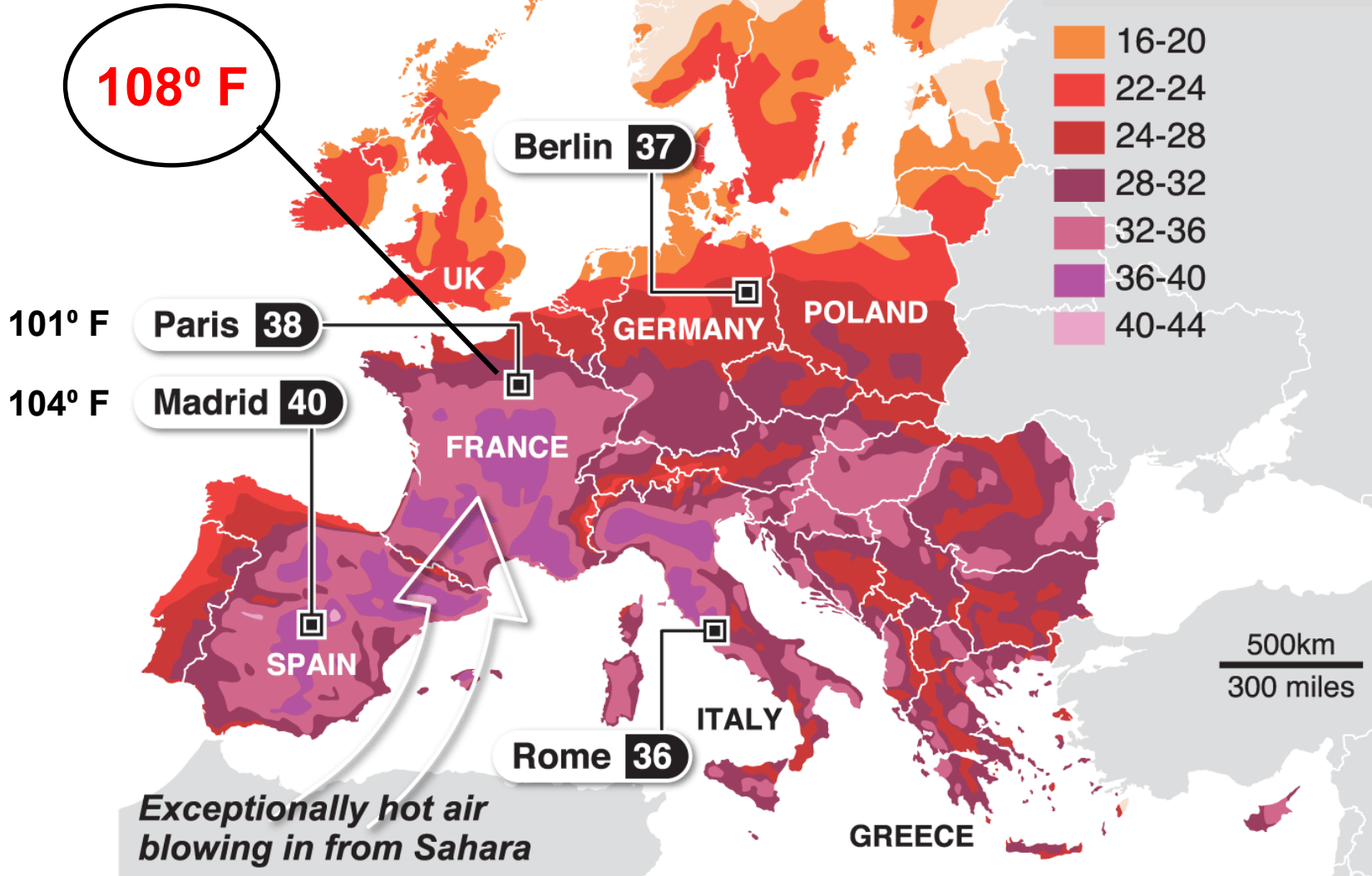
Extreme weather  
almost everywhere.



# Europe braced for “dangerous” heatwave

An intense heatwave is affecting large swathes of Europe, with temperatures soaring above 40C in many regions

Forecast temperatures













# Cuomo proposes \$300 million plan to reimagine Erie Canal

Posted: 4:15 PM, Jan 06, 2020 Updated: 7:33 AM, Jan 07, 2020

By: Anthony Reyes



NEW YORK (WKBW) — New York Governor Andrew Cuomo announced Monday a proposed \$300 million plan to reimagine the Erie Canal.

The funding would go towards repurposing the canal to:

- Grow regional tourism
- Reduce flooding in canal communities
- Improve irrigation for farmers
- Expand fishing opportunities
- Restore wetlands



"When the Erie Canal was created in the 19th century it set the state and the nation on a path to prosperity, and this year we will repurpose the canal to fit our state's 21st century needs," said Governor Cuomo. "This bold and visionary plan to transform this historic waterway will build on the success of the Empire State Trail, grow tourism across Upstate New





**Architecture can  
improve the human  
condition . . .  
and our planet.**

**ThomasVonierArchitect**  
architect.thomas@gmail.com